



---

**SANLORENZO 88' | 2008**

L.O.A.: 26.75 M (87'76") | Builder: SANLORENZO | Built: 2008

YACHTILITY



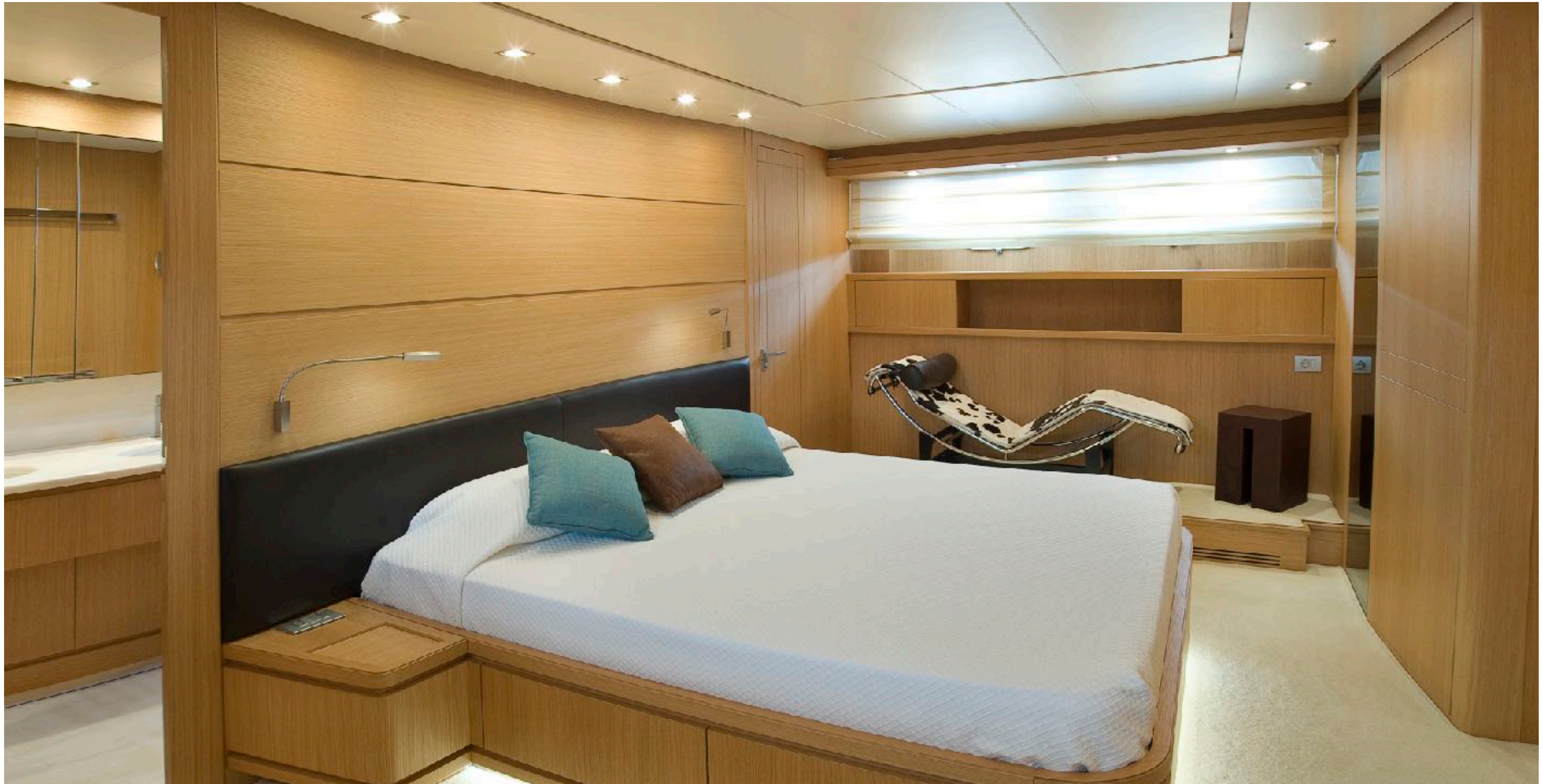
SANLORENZO 88' - 2008 | SALONS



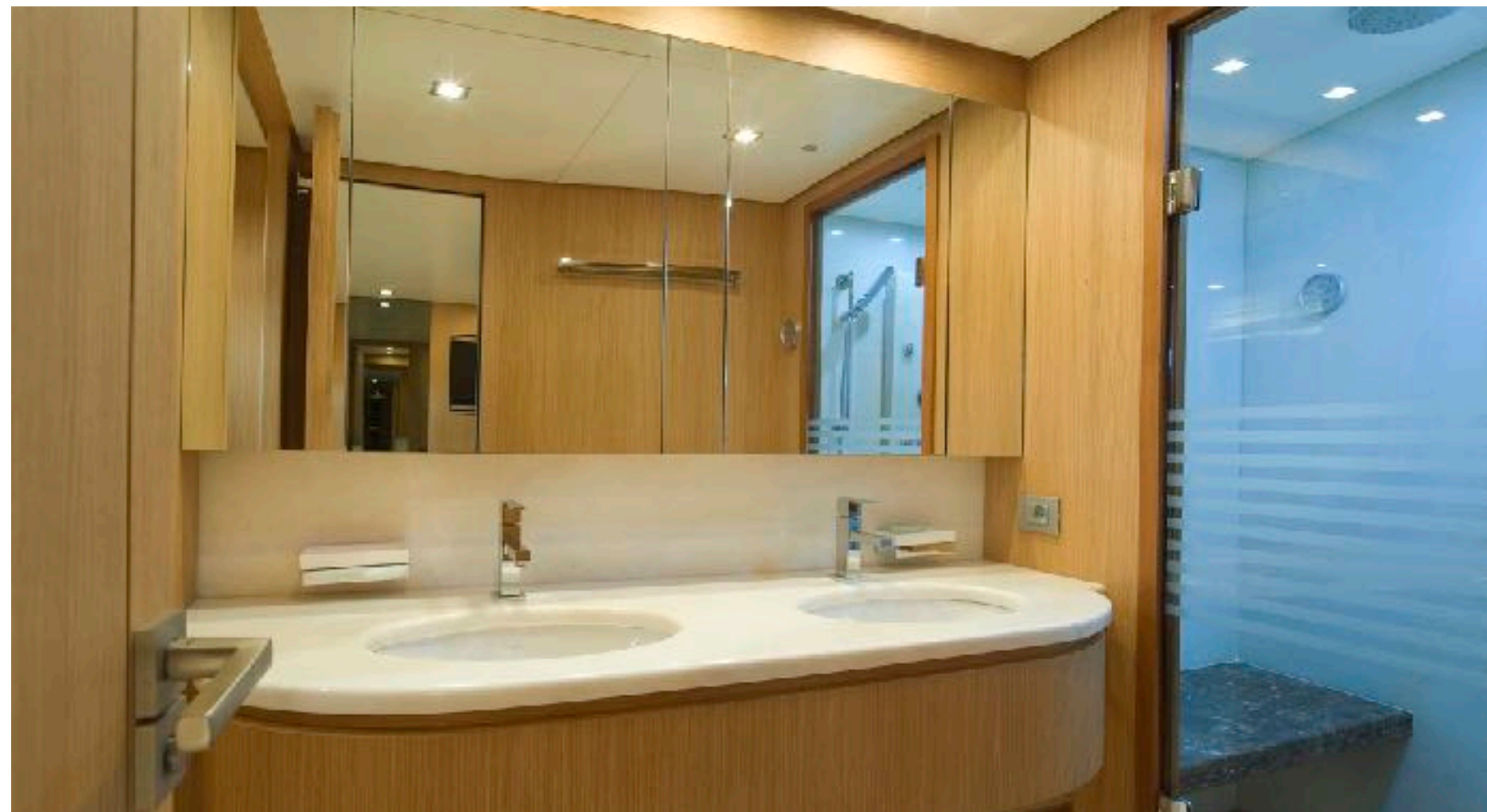
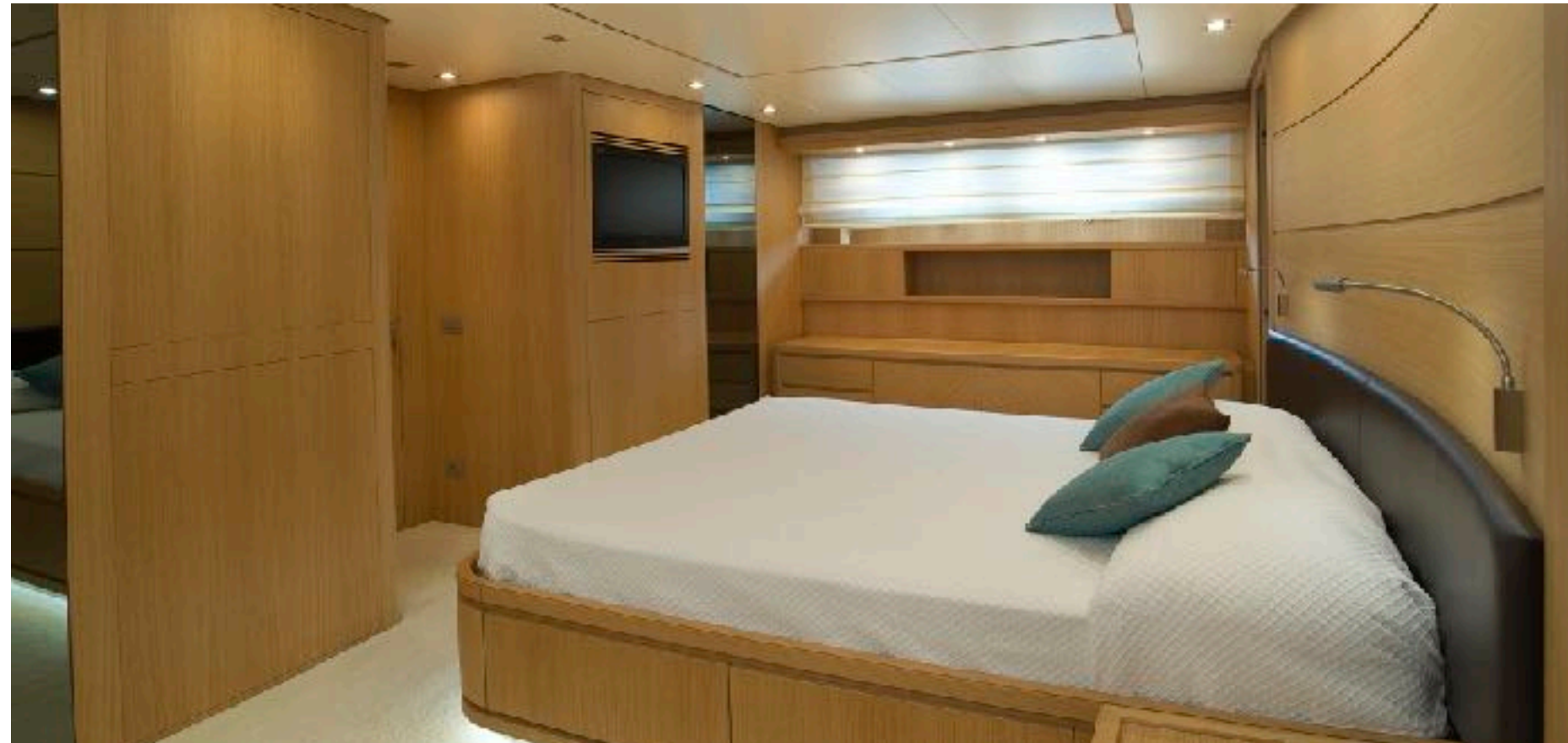
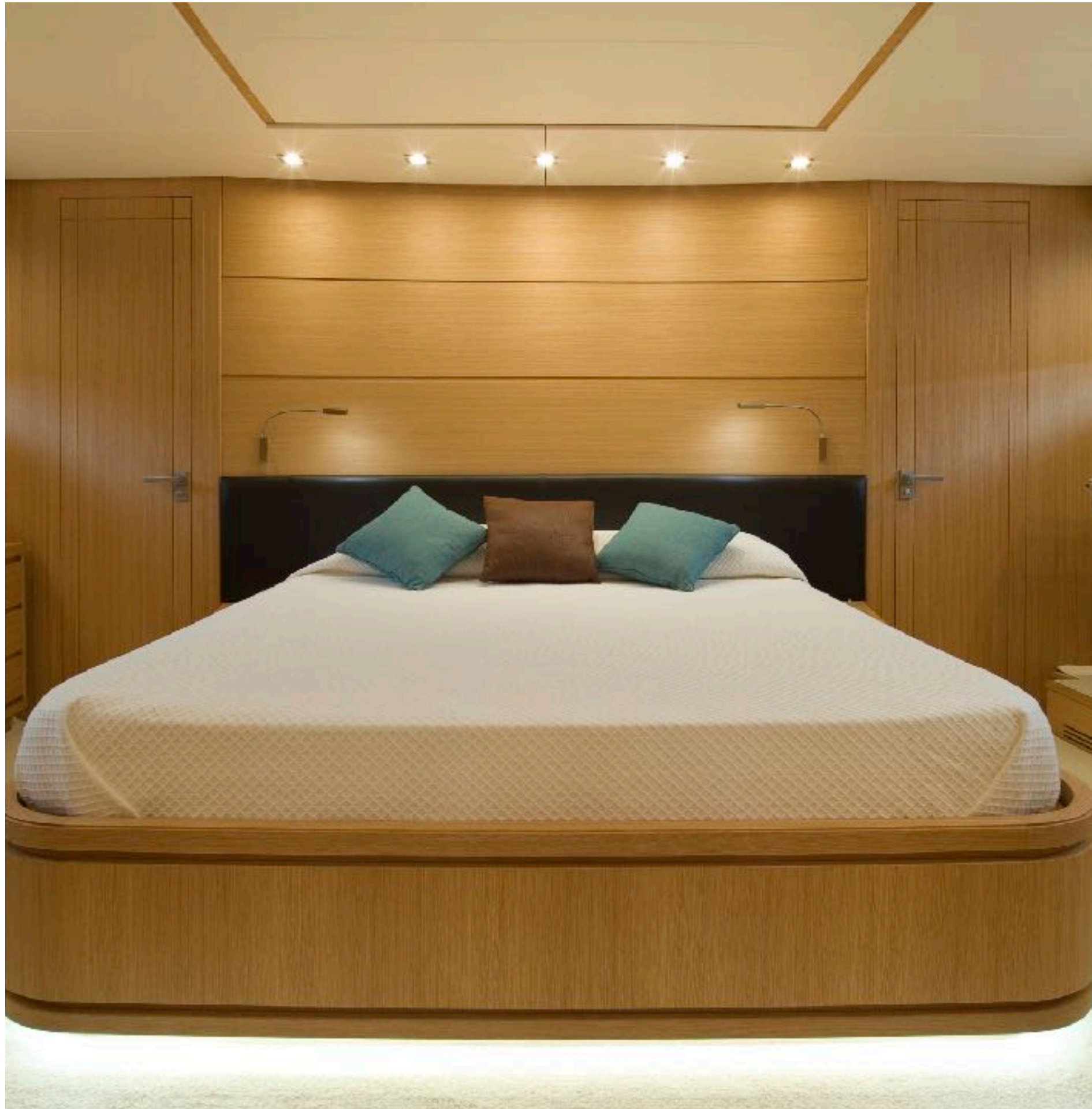
SANLORENZO 88' - 2008 | DINNING AREAS



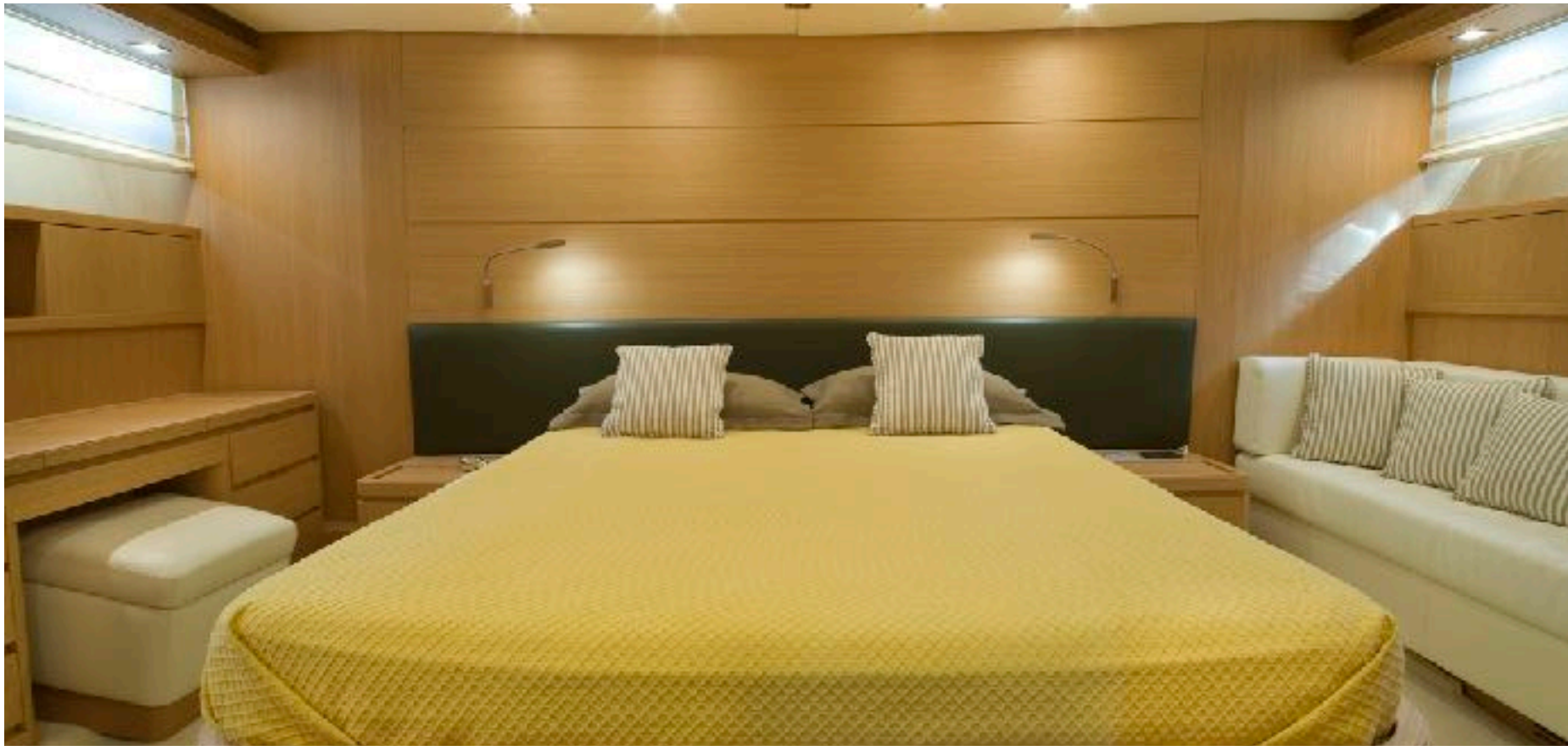
SANLORENZO 88' - 2008 | SUITES & CABINS



SANLORENZO 88' - 2008 | SUITES & CABINS



# SANLORENZO 88' - 2008 | SUITES & CABINS

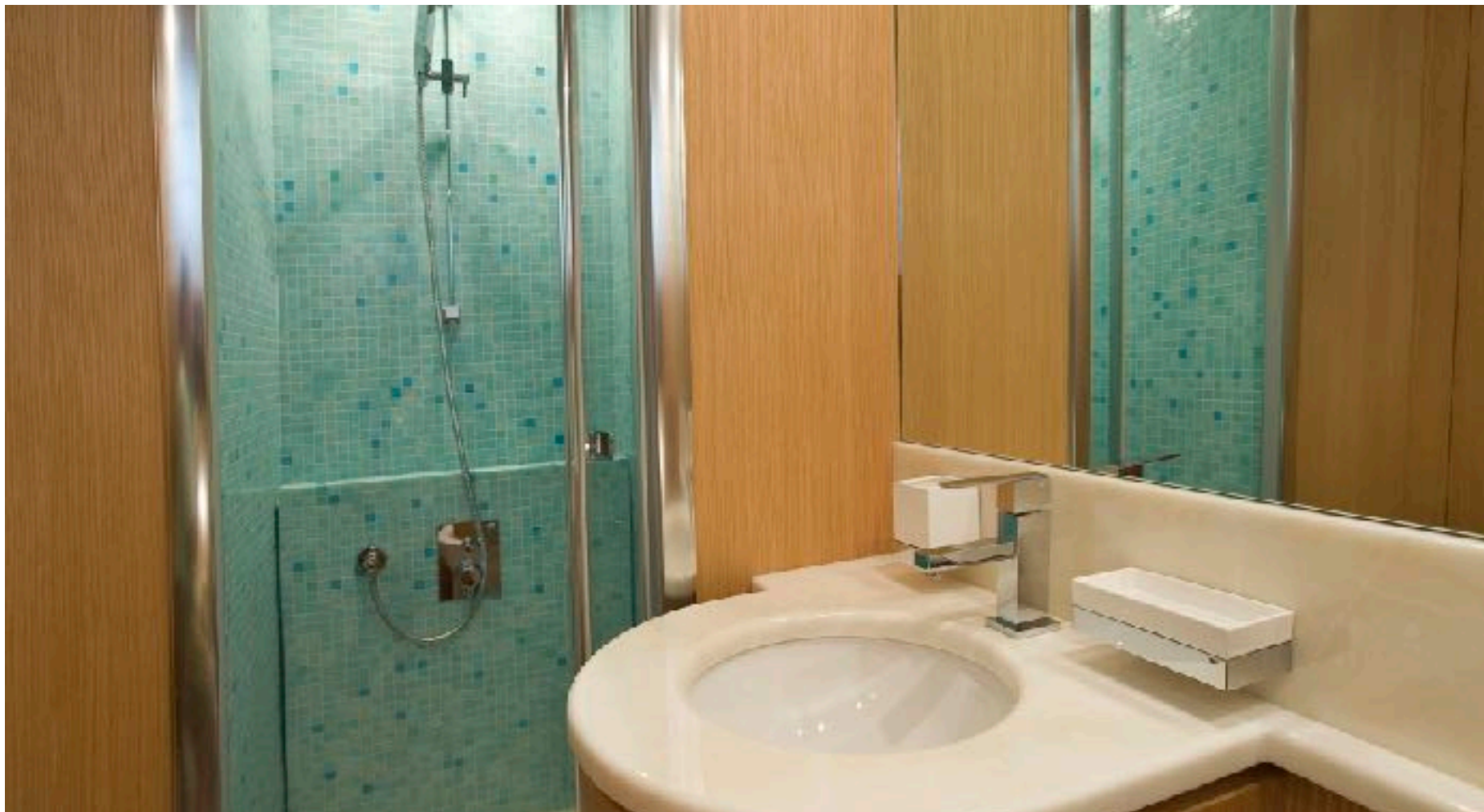


# SANLORENZO 88' - 2008 | SUITES & CABINS





# SANLORENZO 88' - 2008 | SUITES & CABINS



SANLORENZO 88' - 2008 | KITCHEN



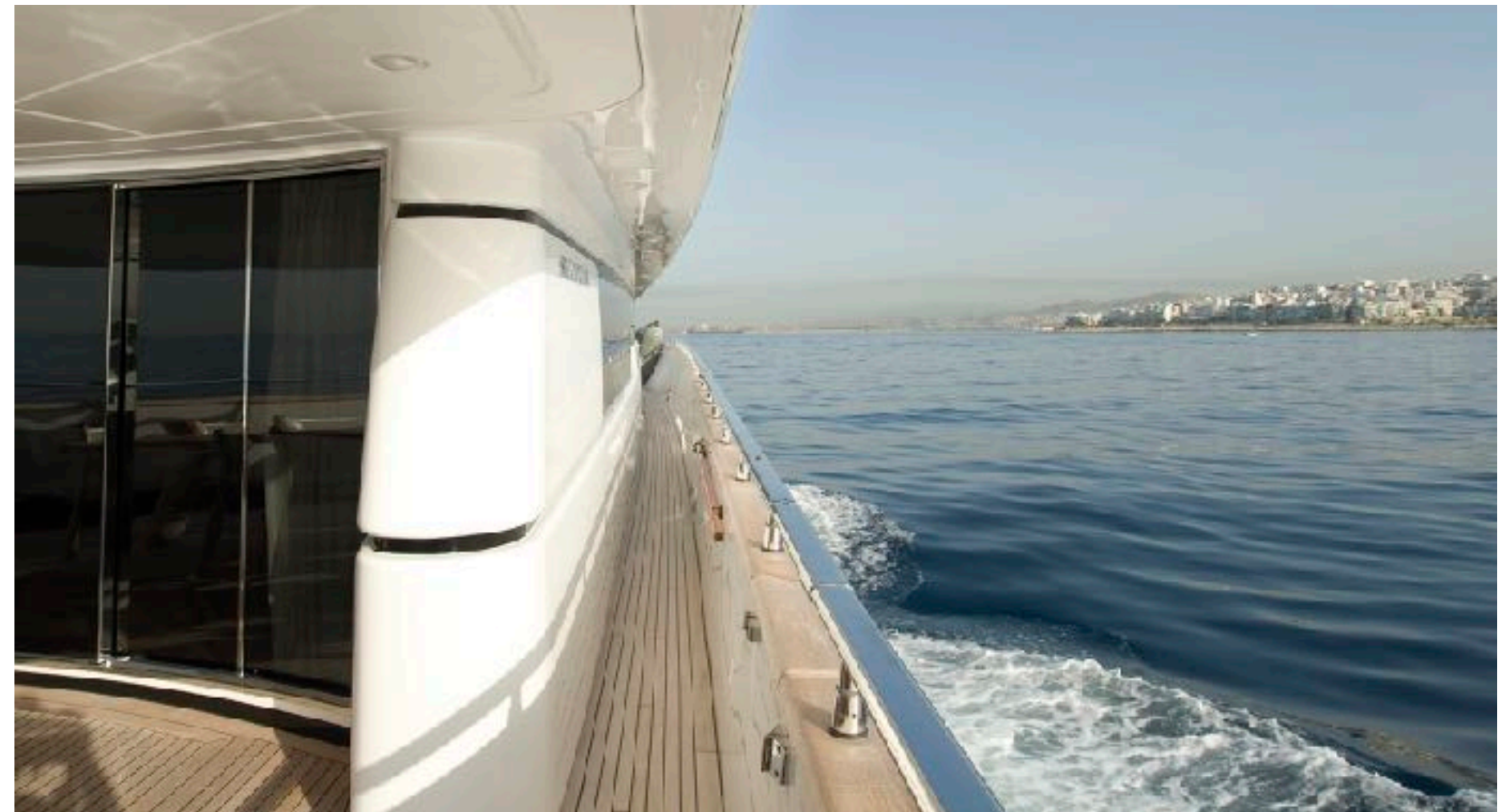
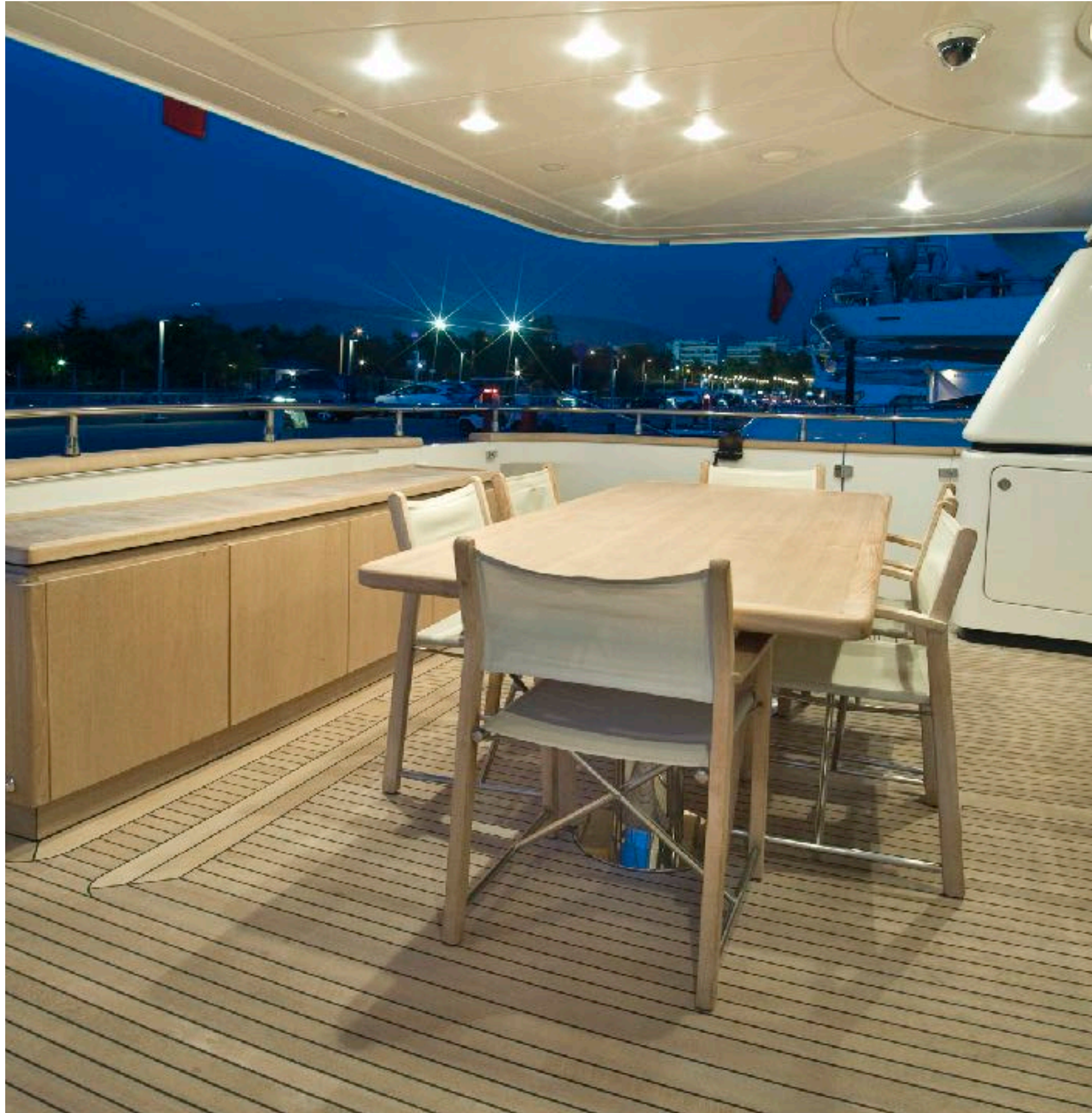
SANLORENZO 88' - 2008 | COCKPIT



SANLORENZO 88' - 2008 | ENGINES



SANLORENZO 88' - 2008 | EXTERIOR



SANLORENZO 88' - 2008 | EXTERIOR











**OASIS**

SANLORENZO 88' - 2008

ASKING PRICE:

**2.500.000 EUR | VAT PAID**

BUILDER:

**SANLORENZO**

MODEL:

**SANLORENZO 88'**

BUILT/REFIT:

**2008**

ENGINES:

**2XMTU (2.185 HP)**

L.O.A. (M/FT):

**26.75/87'76"**

BEAM (M/FT):

**6.75/22'14"**

DRAFT (M/FT):

**3.21/10'53"**

FUEL:

**DIESEL**

HULL MATERIAL:

**GRP**

CRUISING SPEED:

**25 KN**

CABINS/GUESTS:

**4/8**

LOCATION:

**GREECE**

YACHTILITY